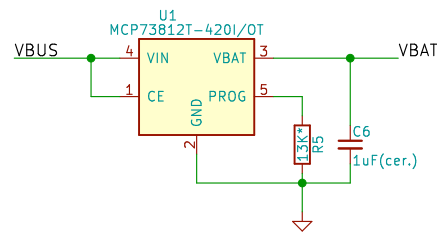
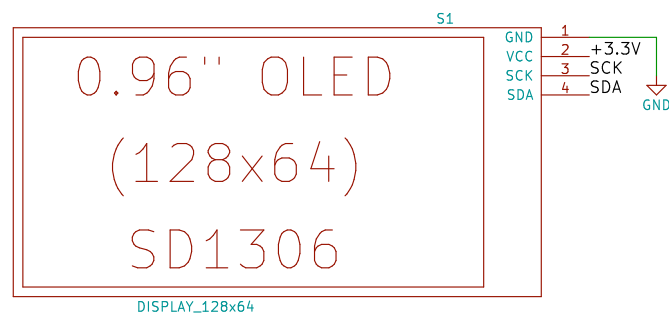
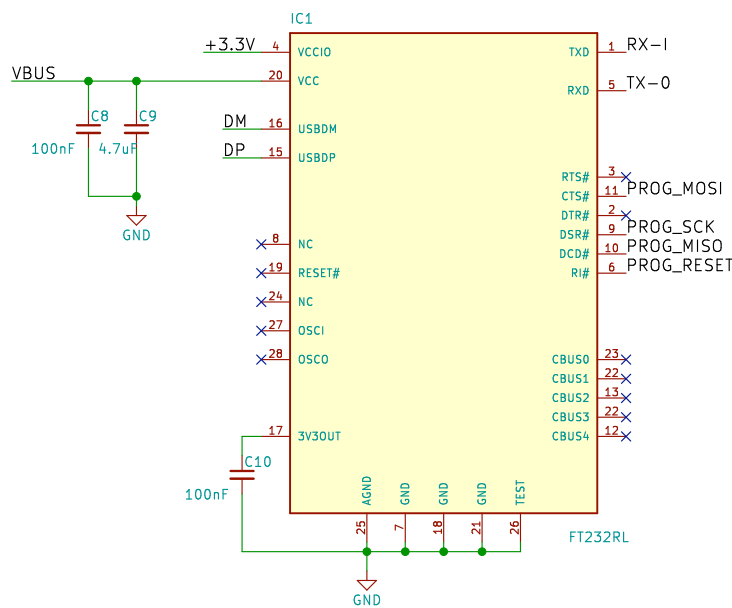
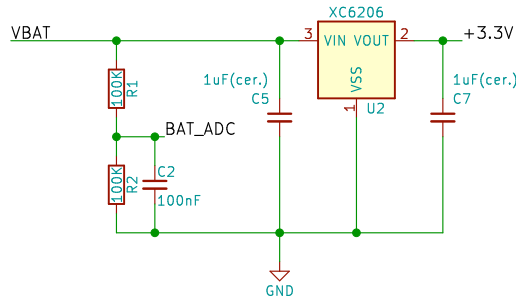


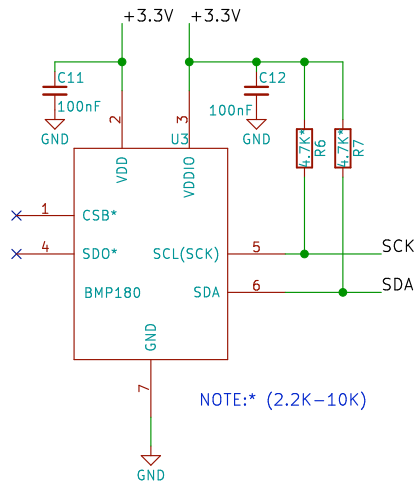
NOTE:\* optional



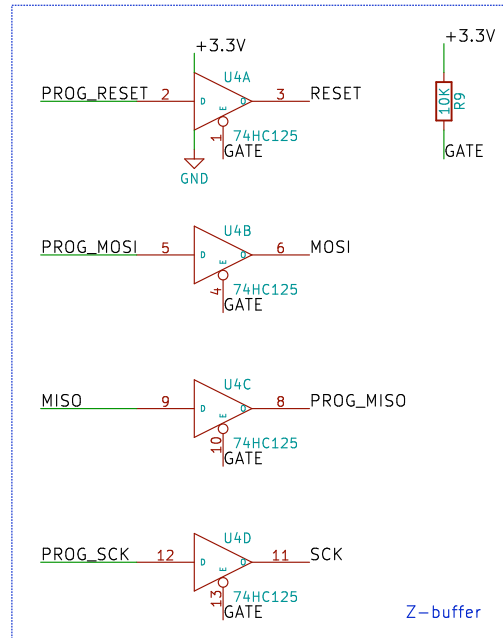
NOTE:\* (11K-16K) as per comments



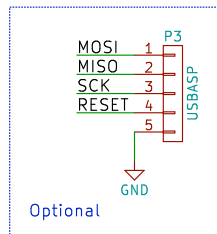
DISPLAY\_128x64



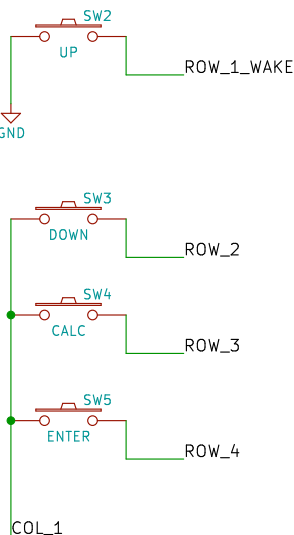
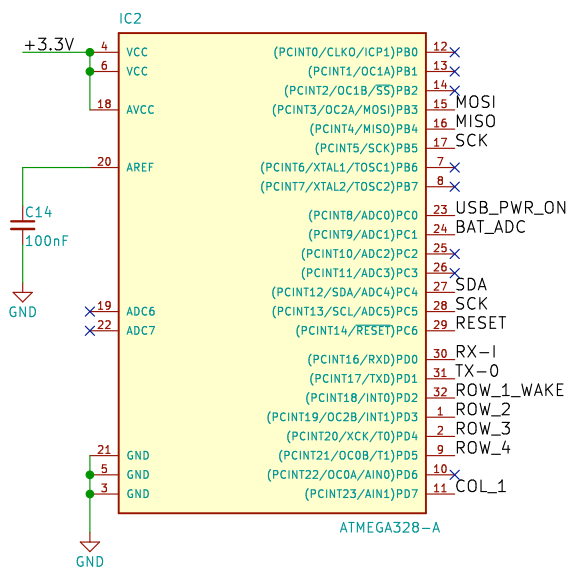
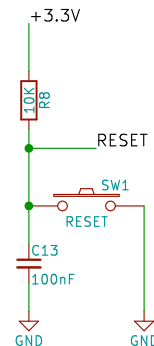
NOTE:\* (2.2K-10K)



Z-buffer



Optional



MCU:  
LOW LEVEL:  $-0.5V_{cc} \dots 0.3V_{cc} = -0.5 \dots 0.9V$   
HIGH LEVEL:  $0.6V_{cc} \dots V_{cc} + 0.5V = 1.8 \dots 3.5V$   
Li-Po charge current for (150 mA):  
(0.4...0.6)C=60-90 mA  
Rprog=1000/Charge\_current=11-16kOhm